

PG8

Gateway



CANopen

J1939



The **Blink Marine PG8** is a gateway module designed to provide customers with additional, simple interface solutions to their Digital Switching Systems at a low cost. PG8 is a perfect integration solution whether you are wanting:

- greater versatility of bespoke choice in switch types and dash appearance
- additional inputs (digital or analogue)
- low power outputs

All while still enjoying all the benefits of CANbus digital power distribution

1. Switch Versatility

The PG8 is a great way to extend the versatility and flexibility of selection in switch types, sensors and dash layouts, yet continue to enjoy all the benefits of digital power distribution. This includes dual control stations, remote trip re-setting and reduced cabling. All of this is available with one low-cost interface gateway. Every range or model that requires a dash layout change becomes a simple process utilizing the same hardware, leaving all the feature enhancements and interconnectivity to new devices networked.

2. Digital/Analogue inputs

The PG8 allows inclusion of up to 8 digital inputs and up to 4 analogue inputs to any given onboard CANbus system. This simplifies management of additional input signals from things such as sensors in a boat or motorhome application.

3. Low power outputs

Thanks to PG8 it is now also possible to manage up to 8 low current outputs (max 150mA), primarily attributed to switch indicator LEDs.

Electrical Features

- 8 inputs that detect either open or switch to ground contacts
- 8 digital inputs
 - Can also be configured as low power outputs
 - Up to 4 circuits can be configured as analogue inputs
- 1 output for CANbus
 - Can also be configured as RS-485

External status communication on the bus

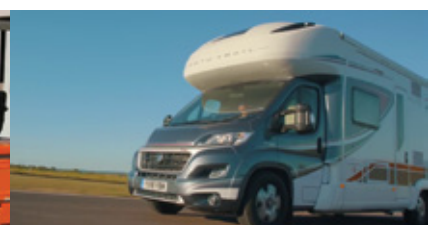
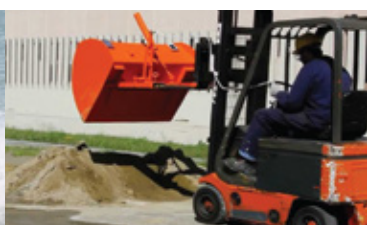
Environmental Features

- Operating ambient temperature: -40°C to +85°C
- Storage ambient temperature: -40°C to +85°C
- Humidity: 0 to 98% (non-condensing)
- IP67 enclosure

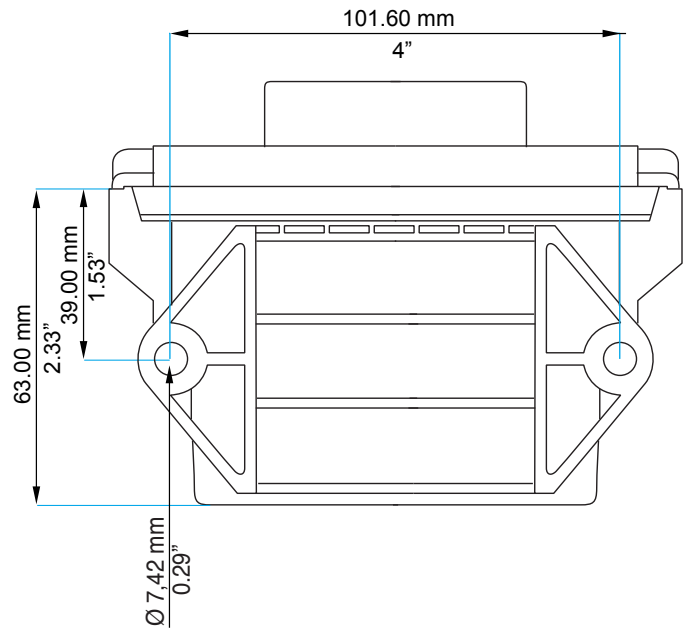
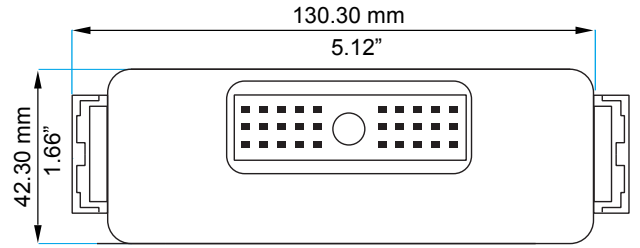
Special Features

- CAN-bus compatible (CANopen/J1939 compliance available)

blink
MARINE



SPECIFICATIONS FOR PG8 GATEWAY

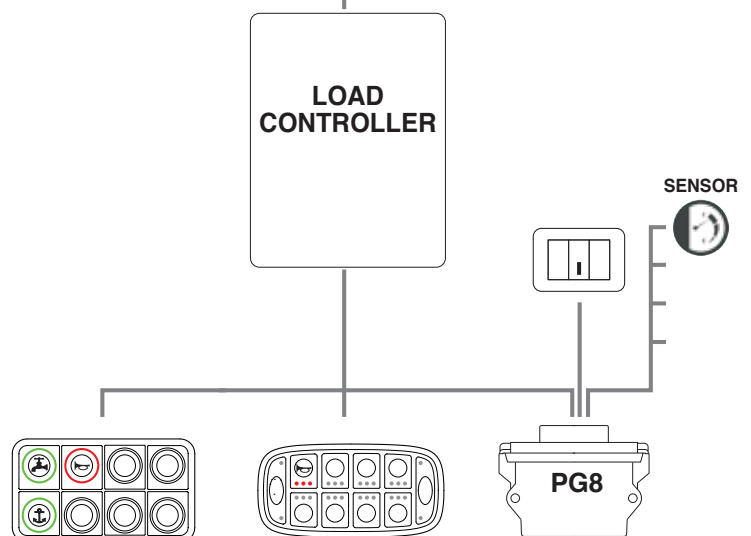
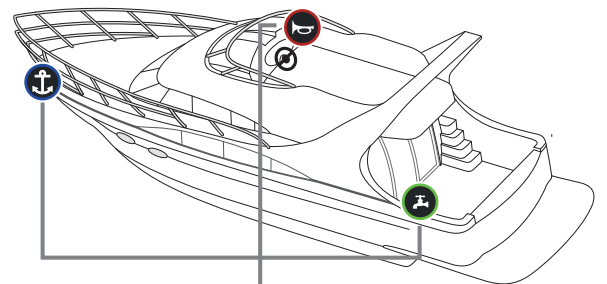


ELECTRICAL	PG8
Supply voltage	12-24V Nominal 8-32V
Standby current	<30mA per gateway
Switch indicator current	150mA per indicator (internally limited)
Communication BUS	CANbus (CANopen or J1939) or RS485

MECHANICAL	PG8
Connector	Cinch 581-01-30-064
Mating connector	Cinch 581-01-30-029
Housing/cover	33% Glass Filled Polymer
PC board	0.062" thick, Nema Grade FR-4, Double clad with 1oz copper

ENVIRONMENTAL	PG8
Operating temperature	-40°C to +85°C
Storage temperature	-40°C to +85°C
Humidity	0 to 98% (no condensation)
Salt spray	Per ASTM B117
Ingress Protection Rating	IP67

FEATURES	PG8
Size mm/inches	63x130,3x42,3 / 2.33x5.12x1.66
Weight	185 gr



Blink S.r.l.
 Via Montefeltro, 6 - 20156 Milano - Italy
 Tel. +39 02 3088583 - Fax +39 02 33406697
www.blinkmarine.com - info@blinkgroup.com

!WARNING! IMPROPER SELECTION, IMPROPER USE AND/OR FAILURE OF THE BLINK SYSTEMS PRODUCTS DESCRIBED HEREIN OR RELATED ITEMS CAN CAUSE DEATH, PERSONAL INJURY AND PROPERTY DAMAGE. This document and other information from Blink, provide product and/or system options for further investigation by users having technical expertise. It is important to analyze all aspects of the application, including consequences of any failure. Due to the variety of operating conditions and applications for these product(s), the manufacturer of the application is solely responsible for marking the final selection of the product(s) and assuring that all performance, safety and warning requirements of the application are met. The products described herein, including without limitation, product features, specifications, designs, availability and pricing, are subject to change by Blink at any time without notice.